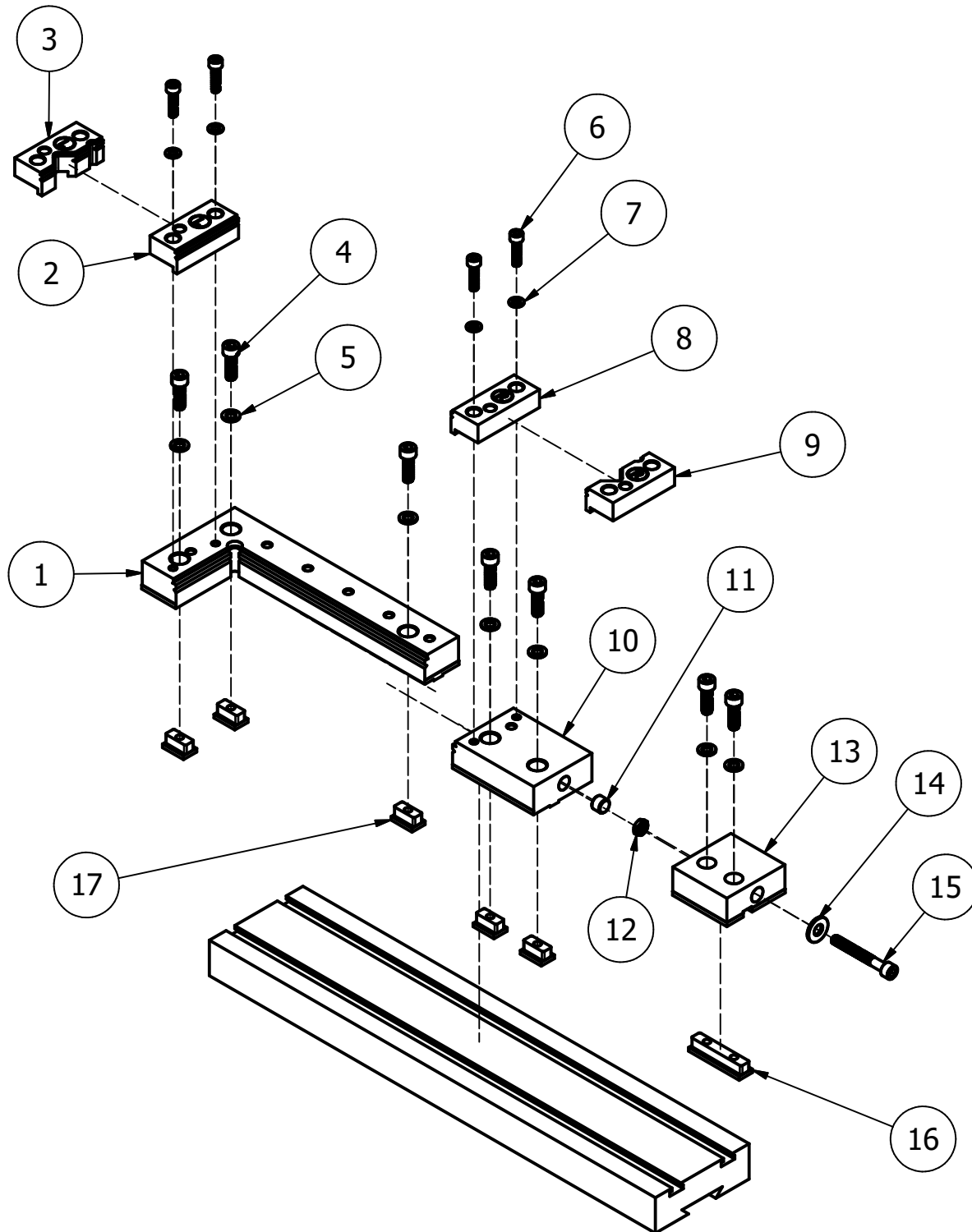


SLIM MILLING VISE

P/N 2000



PART LIST

ITEM	PART NUMBER	DESCRIPTION	QTY
1	2010	Vise block - Left Jaw 90°	1
2	2051	Small and thin parts auxiliary jaw	1
3	2041	Rounded parts auxiliari left jaw	1
4	2012	SHC Screw M5 x 16mm	7
5	2013	5mm I.D. washer	7
6	2043	SHC Screw M4 x 16mm	4
7	2044	4mm I.D. washer	4
8	2052	Small and thin parts auxiliary jaw	1
9	2042	Rounded parts auxiliari right jaw	1
10	2020	Right Jaw - Adjustable block	1
11	2021	Steel pin	1
12	2031	Nut N10-24	1
13	2030	Fixing block	1
14	2032	3/16" I.D. washer	1
15	2033	SHC Screw N10-24 x 1 1/2"	1
16	2034	Dual screws T-nut 37,50mm	1
17	2011	T-Nut 15,50mm	5